



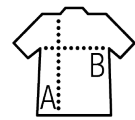
SHORT SLEEVE OXFORD MEN'S SHIRT

Quality

OXFORD - 70% cotton - 30% polyester
Weight: 135 gsm colour, 130 gsm white

Style

Straight cut
Short sleeves
2 button collar
7 tone-on-tone button placket
Left chest pocket
2 side pleats at back



Sizes	S	M	L	XL	XXL	3XL	4XL
A/B	77/56	78/60	79/64	80/68	81/72	82/76	83/80



Sizes	S	M	L	XL	XXL	3XL	4XL
cm	37-38	39-40	41-42	43-44	45-46	47-48	49-50

PACKAGING



1



20

Carton size : 55 x 36 x 17 cm
Weight per carton : 6,7 kg

CHARACTERISTICS



White



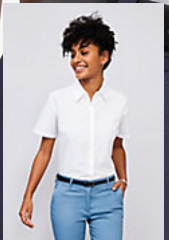
Sky blue



Black



Silver



SOL'S ELITE
16030

